



# **2020 Annual Report**

## **Metro Crisis Coordination Program (MCCP)**

Prepared for the  
Metro Regional  
Crisis Planning  
Group  
(MRCPG)

## Metro Crisis Coordination Program Overview

The Metro Crisis Coordination Program (MCCP) began operation in 1996. MCCP coordinates the collaborative effort of providing behavioral crisis services between the seven metropolitan counties of Anoka, Carver, Dakota, Hennepin, Ramsey, Scott, and Washington.

MCCP serves as the single point of entry within the metropolitan area, for individuals with intellectual and neurodevelopmental disorders seeking behavioral crisis support services. These services strive to preserve and maintain the individual in their residential and work/educational setting through cost effective, positive resources. The resources are comprised of MCCP personnel and other licensed crisis service vendors, to implement the person's goals and meet their needs, as identified and supported by the Metro Region Crisis Provider Group (MRCPG).

### 2020 In-Depth

In response to the Coronavirus pandemic, MCCP adjusted support delivery. MCCP transitioned to implementation of hybrid approaches through a combination of telehealth platforms, phone interviews/meetings, as well as "in-person" visits where social distancing and other safety precautions and mandates could be upheld. Ongoing adjustments were made throughout the course of the year to align with the safety recommendations from the CDC and MN Department of Health. Although many of the referrals to MCCP were similar to other years, there were also many requests for assistance specific to the pandemic environment (mask wearing, social distancing, interruption in social supports/activities, etc.).

Though crisis bed coordination during the pandemic also presented additional precautions and protocols for crisis bed providers and slowed the intake process at times, crisis bed placement continued with few interruptions. Four IDD child crisis beds which had transferred to an alternate provider late in 2019 were returned to full capacity by mid-July 2020. As a result, crisis bed availability was restored to 24 IDD adult beds, 12 IDD child beds, 4 IDD adult transition beds, and 4 child beds for those on the CADI waiver.

In 2018 MCCP began expanding supports through a pilot project providing technical assistance and crisis bed coordination to individuals with mental health needs. These referrals consist of individuals who are on a CADI waiver. This pilot project concluded in mid-2019 with positive results leading to the decision to continue this service on a regular basis.

Despite the changes in the method of service provision of many agencies due to the pandemic, MCCP was able to complete a variety of trainings as a support to the region. A key portion of this included a variety of trainings with residential providers as well as specialized trainings with contracted and county Case Managers regarding the logistics

and breadth of the region's crisis system. A listing of trainings offered by MCCP can be found by visiting the MCCP website at [www.metrocrisis.org](http://www.metrocrisis.org)

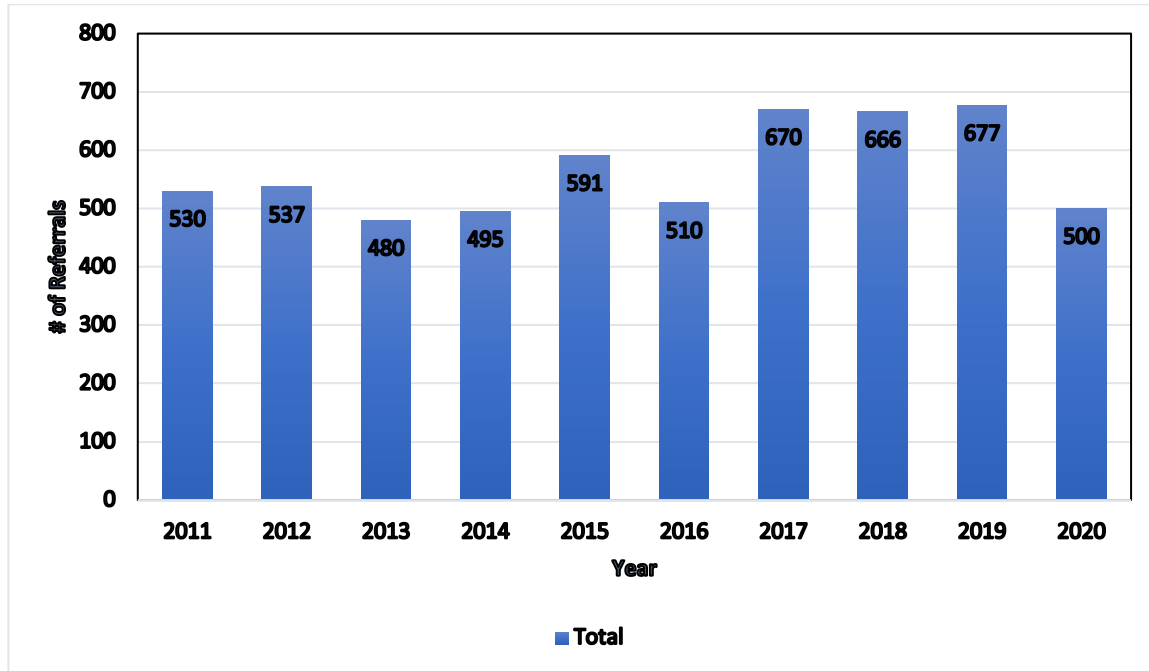
The residential openings list website <http://mnopenings.org/> continues to be of great benefit to parents, county Case Managers, other professionals, providers and anyone interested in knowing more about open placements in the IDD residential system throughout Minnesota. Overall the website has had more than 400 providers post thousands of individual openings in over 50 counties throughout Minnesota. In late 2020 MCCP in conjunction with DHS Child Safety and Permanency Division added COVID exposed/tested positive children bed resources to the openings list.

MCCP continues to provide child/adolescent, and adult psychiatric consultation services. This service is available through established agreements between MCCP and the consulting psychiatrists. Our current child/adolescent psychiatrist works within the private practice sector, and the adult psychiatrist works with the State of Minnesota Community Based Services. The MCCP nurse continues to manage the "pool" of requests from active MCCP technical assistance referrals, according to availability within the referral timeframe, along with a variety of prioritization factors. In 2020 MCCP provided 19 consults (8 adults, 11 child/adolescent) for a total of 203 combined consults since onset of this service in 2013.

## Other Key Data

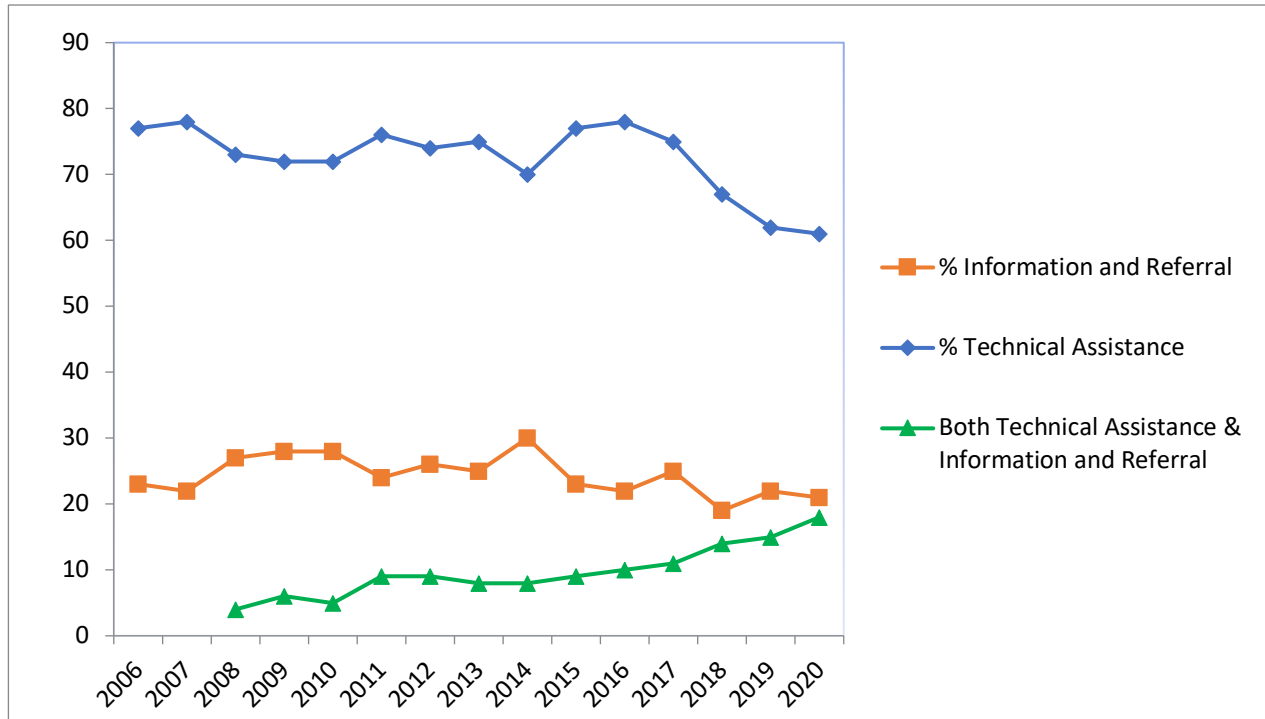
Data is provided bi-annually to the MRCPG, and monthly to the seven-metro county steering committee. Information supplied includes utilization data broken out per type of service (Technical Assistance, Staff Augmentation, Information & Referral) by county and aggregate, projected use, crisis/transition bed utilization by vendor, and individuals waiting in the crisis bed placement pool.

## Total # of Referrals 2011 through 2020



In 2020 there were 500 referrals for individuals with IDD, representing a decrease (26%) in referrals from 2019 (677). At the end of 2020 MCCP had received 12,596 referrals in total over twenty-four years.

## % of Referrals by Type of Service Requested (TA Only, I & R Only, TA / I & R Combined)



The percentage of Technical Assistance (TA) referrals versus Information and Referral (I & R) remains stable (61 % in 2020 and 62% in 2019). Prevention through T.A. remains a priority as the actual cost of a 45 day stay in a crisis bed and the actual cost of a typical T.A. referral is approximately 12 to 1.

Efforts and focus continue with providing T.A. whenever appropriate and possible, including when I & R referrals are made and a bed is not immediately available. In doing so, the T.A. support assists to help de-escalate the behavioral crisis, prevents hospitalization, loss of placement, and at times, has diverted the need for crisis placement. In 2020 there was a 3 % increase in the percentage of the number of referrals made to MCCP requesting both T.A. and I & R (90 total) at the time of intake. The disposition of those cases were as follows;

## Requests for both Technical Assistance and Crisis Bed at Onset of Case

	Referrals requesting both T.A. and I & R at time of referral	Cases concluded within the year <u>without</u> utilization of crisis bed placement	Cases concluded within the year <u>with</u> utilization of crisis bed placement
<b>2008</b>	19	13 (68%)	5 (26%)
<b>2009</b>	29	19 (66%)	10 (34%)
<b>2010</b>	28	19 (68%)	8 (29%)
<b>2011</b>	49	35 (71%)	13 (27%)
<b>2012</b>	51	38 (75%)	12 (23%)
<b>2013</b>	38	27 (71%)	8 (21%)
<b>2014</b>	40	34 (85%)	5 (12%)
<b>2015</b>	54	38 (70%)	14 (26%)
<b>2016</b>	53	45 (85%)	7 (13%)
<b>2017</b>	73	44 (60%)	29 (40%)
<b>2018</b>	95	60 (63%)	35 (37%)
<b>2019</b>	103	87 (84%)	16 (16%)
<b>2020</b>	90	76 (84%)	14 (16%)

\*On occasion, cases concluded with the individual transitioning to an alternative placement (i.e. hospital, treatment center, transition home).

## Crisis/Transition Bed Occupancy

Dedicated Crisis Bed	2009	2010	2011	2012	2013	2014	2015	2016	2017	2018	2019	2020
Dakota (Adult)	78%	87%	89%	82%	88%	75%	59%	73%	81%	78%	59%	64%
Meridian - Golden Hills (Child)	88%	83%	93%	87%	91%	86%	95%	94%	89%	89%	92%	98%
Meridian – Edgewood (Adult)		94%	95%	97%	93%	96%	95%	95%	84%	89%	96%	96%
Meridian - Kentucky (Transition-Adult)					87%	91%	95%	82%	85%	91%	95%	90%
Genesis (Adult)										92%	89%	95%
Wingspan (Adult)										53%	67%	96%
Snyder (Adult)										66%	94%	88%
Rudolph (Adult)										80%	88%	98%
Beacon – Honovi (Child)										97%	97%	86%
Beacon – Blaine Terrace (Child)												50% Opened 7/13/20
Rudolph (Child)										72%	39%	
Minnehaha	79%	87%										
Variable Beds	113%	117%	82%	110%	87%	48%	54%	126%	0%	0%	0%	0%
Average	82%	88%	92%	89%	90%	88%	86%	86%	85%	81%	82%	86%

\*variable bed target established each year based on budget

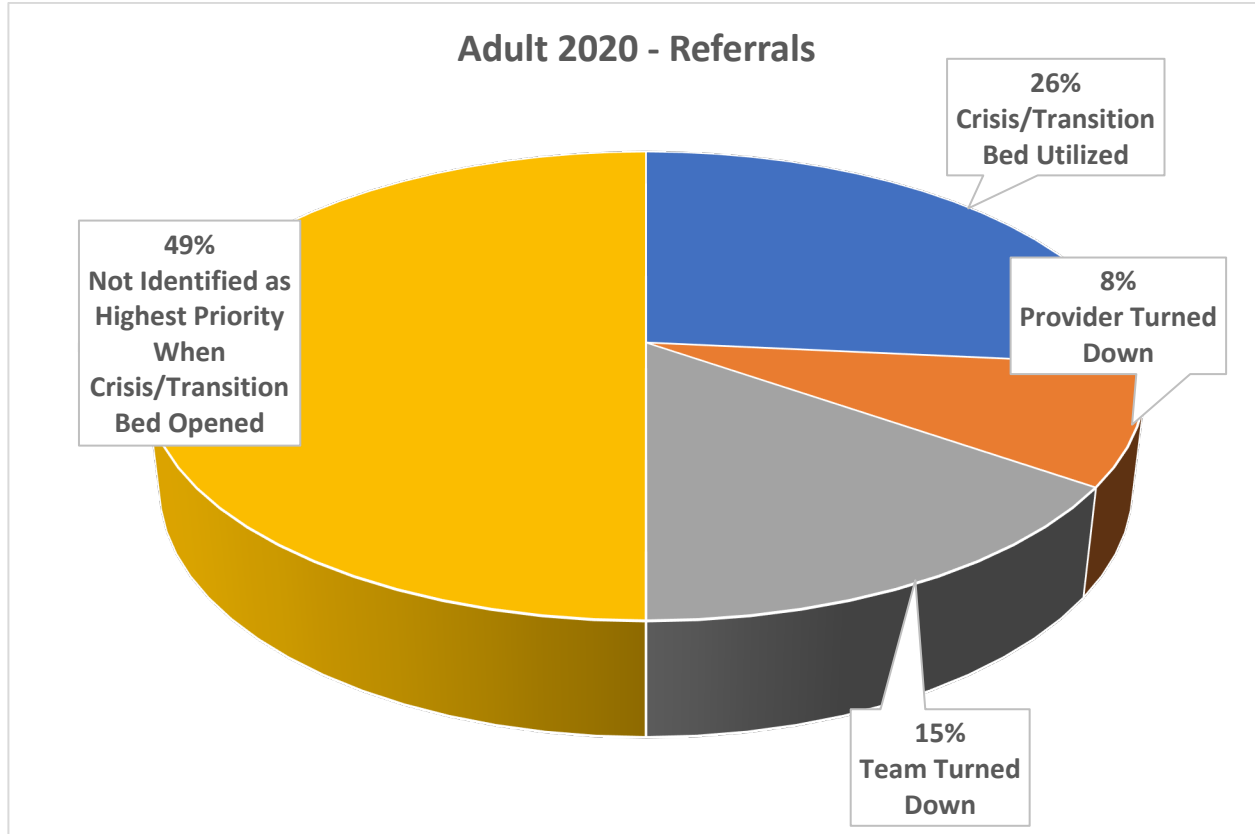
## Crisis Bed Average Length of Stay

<b>Crisis Home</b>	<b>2009</b>	<b>2010</b>	<b>2011</b>	<b>2012</b>	<b>2013</b>	<b>2014</b>
<b>Dakota (Adults)</b>	62 Days	54 Days	95 Days	63 Days	71 Days	68 Days
<b>Meridian – Golden Hills (Children)</b>	50 Days	59 Days	61 Days	75 Days	102 Days	104 Days
<b>Meridian – Edgewood (Adults)</b>		64 Days	81 Days	95 Days	80 Days	161 Days
<b>Minnehaha (Adults)</b>	51 Days	54 Days				
<b>Pine City (Adults)</b>	46 Days	50 Days	54 Days	60 Days	79 Days	123 Days
<b>Special Services Program (SSP -16. &amp; up)</b>	66 Days	66 Days	81 Days	72 Days	67 Days	114 Days
<b>Other Crisis Homes</b>	49 Days	56 Days	62 Days	46 Days	88 Days	39 Days
<b>Average for all Crisis Homes</b>	55 Days	55 Days	74 Days	71 Days	78 Days	105 Days
<b>Average Length of Stay Adults</b>			79 Days	71 Days	75 Days	98 Days
<b>Average Length of Stay Children</b>			69 Days	72 Days	90 Days	124 Days



<b>Crisis Home</b>	<b>2015</b>	<b>2016</b>	<b>2017</b>	<b>2018</b>	<b>2019</b>	<b>2020</b>
<b>Dakota (Adults)</b>	86 Days	81 Days	82 Days	115 Days	122 Days	124 Days
<b>Meridian – Golden Hills (Children)</b>	82Days	152 Days	65 Days	93 Days	149 Days	297 Days
<b>Meridian – Edgewood (Adult)</b>	107 Days	198 Days	58 Days	100 Days	141 Days	196 Days
<b>Genesis – (Adult)</b>			88 Days	84 Days	86 Days	209 Days
<b>Snyder – (Adult)</b>			65 Days	69 Days	114 Days	169 Days
<b>Rudolph (Adult)</b>				146 Days	108 Days	304 Days
<b>Beacon–Honovi (Children)</b>			94 Days	129 Days	177 Days	412 Days
<b>Beacon – Blaine (Children)</b>						103 Days Opened 7/13/20
<b>Wingspan (Adult)</b>				130 Days	82 Days	245 Days
<b>Rudolph – (Children)</b>			60 Days	132 Days	82 Days	
<b>Pine City (Adults)</b>	39 Days	130 Days (3 placements)				
<b>Special Services Program (SSP-16 &amp; up)</b>	120 Days	93 Days				
<b>Other Crisis Homes</b>	23Days					
<b>Average for all Crisis Homes</b>	94 Days	120 Days	72 Days	111 Days	115 Days	229 Days
<b>Average Length of Stay (Adults)</b>	99 Days	100 Days	73 Days	107 Days	109 Days	208 Days
<b>Average Length of Stay (Children)</b>	82 Days	175 Days	71 Days	118 Days	127 Days	271 Days

## Adult Referrals for Crisis/Transition Placement



Total Adult Referrals for Potential Crisis Placement: 203

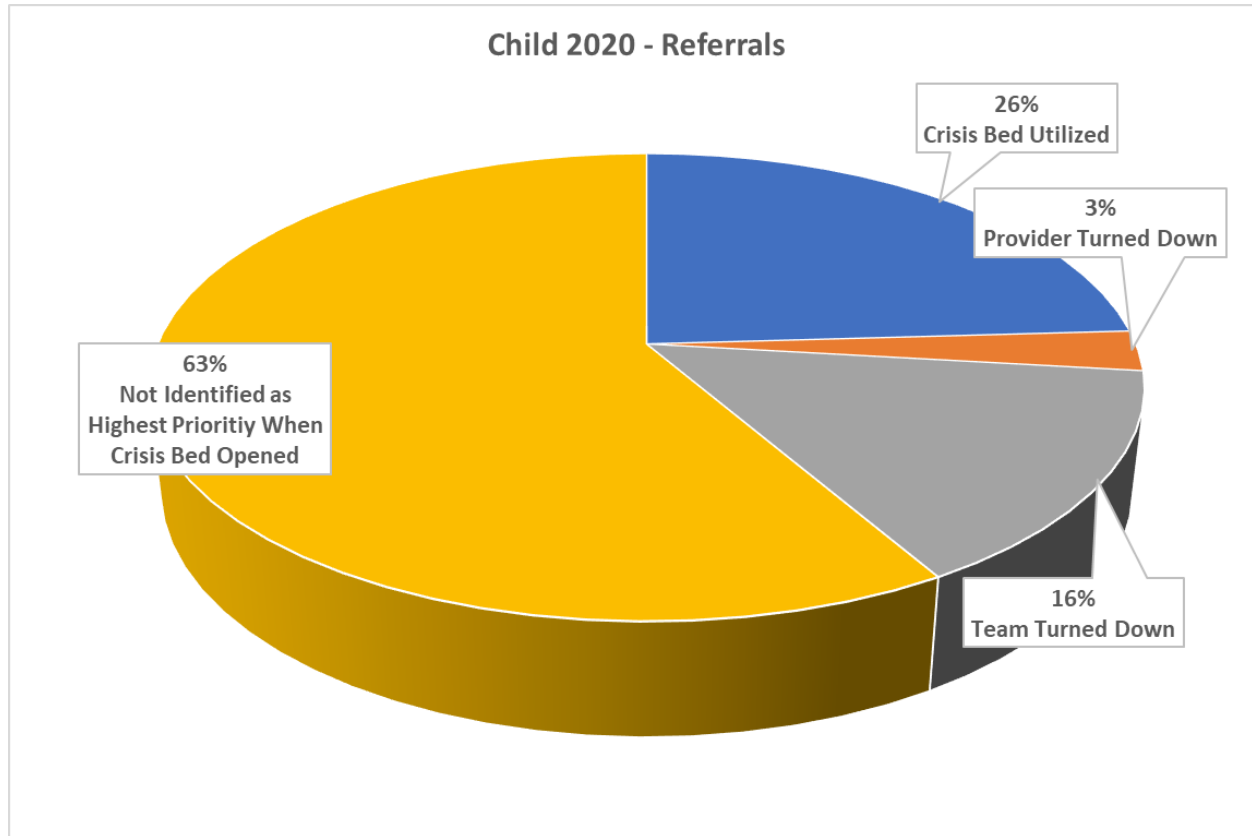
Prioritized – Referral Turned Down: 47

Turned Down by Provider: 17

Turned Down by Team: 30

Total Beds Utilized: 56

## Child Referrals for Crisis Placement



Total Child Referrals for Potential Crisis Placement: 73

Prioritized – Referral Turned Down: 14

Turned Down by Provider: 2

Turned Down by Team: 12

Total Beds Utilized: 46